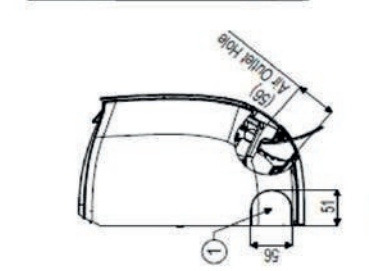
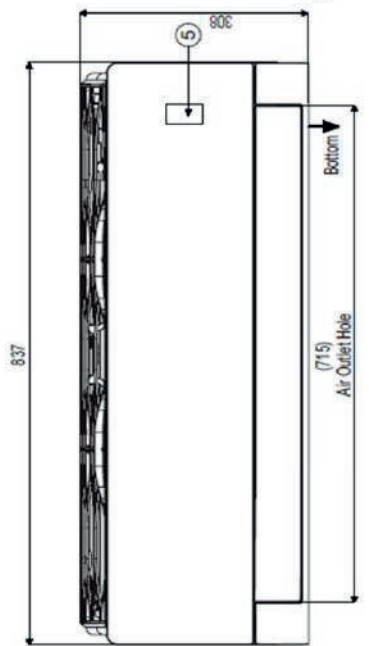
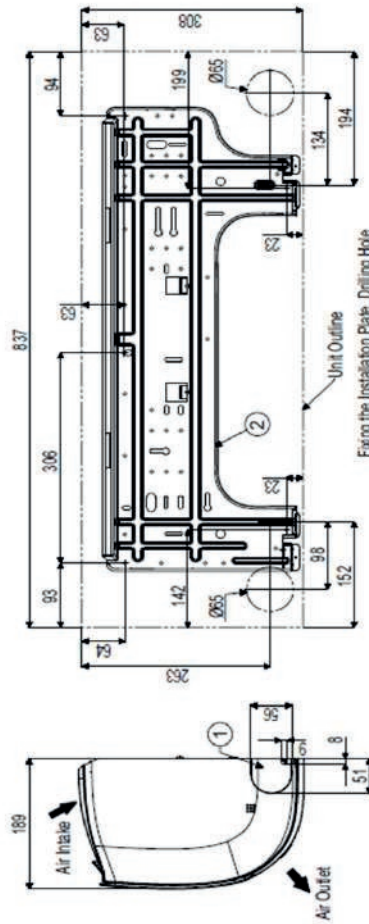
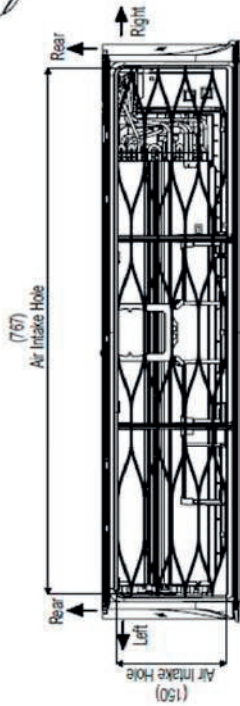
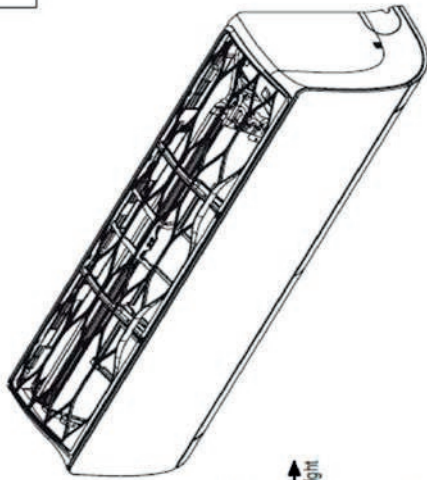


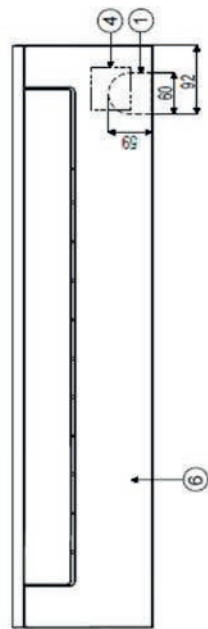
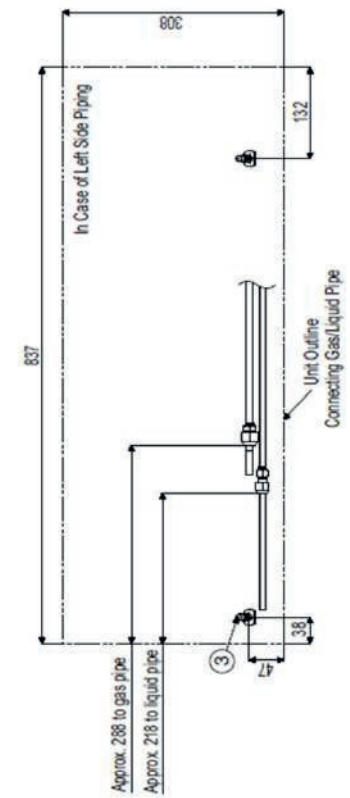
Nástěnné jednotky RAC - STANDARD (PLUS) PC09~12SQ, S09~12EQ

SJ Chassis

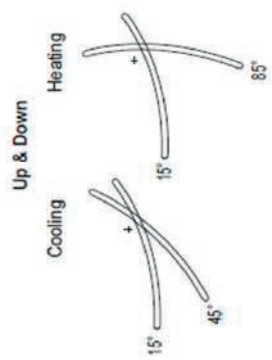
Unit : mm



Firing the Installation Plate, Drilling Hole



* If airflow direction control is available.



No	Name	Knock-out Type	Description
6	Decoration Cover		
5	Display & Remote Controller Signal Receiver		
4	Terminal Block for Power Supply and Communication		
3	Drain Hose Connection		
2	Installation Plate		
1	Refrigerant, Drain Pipe and Cable Routing Hole		