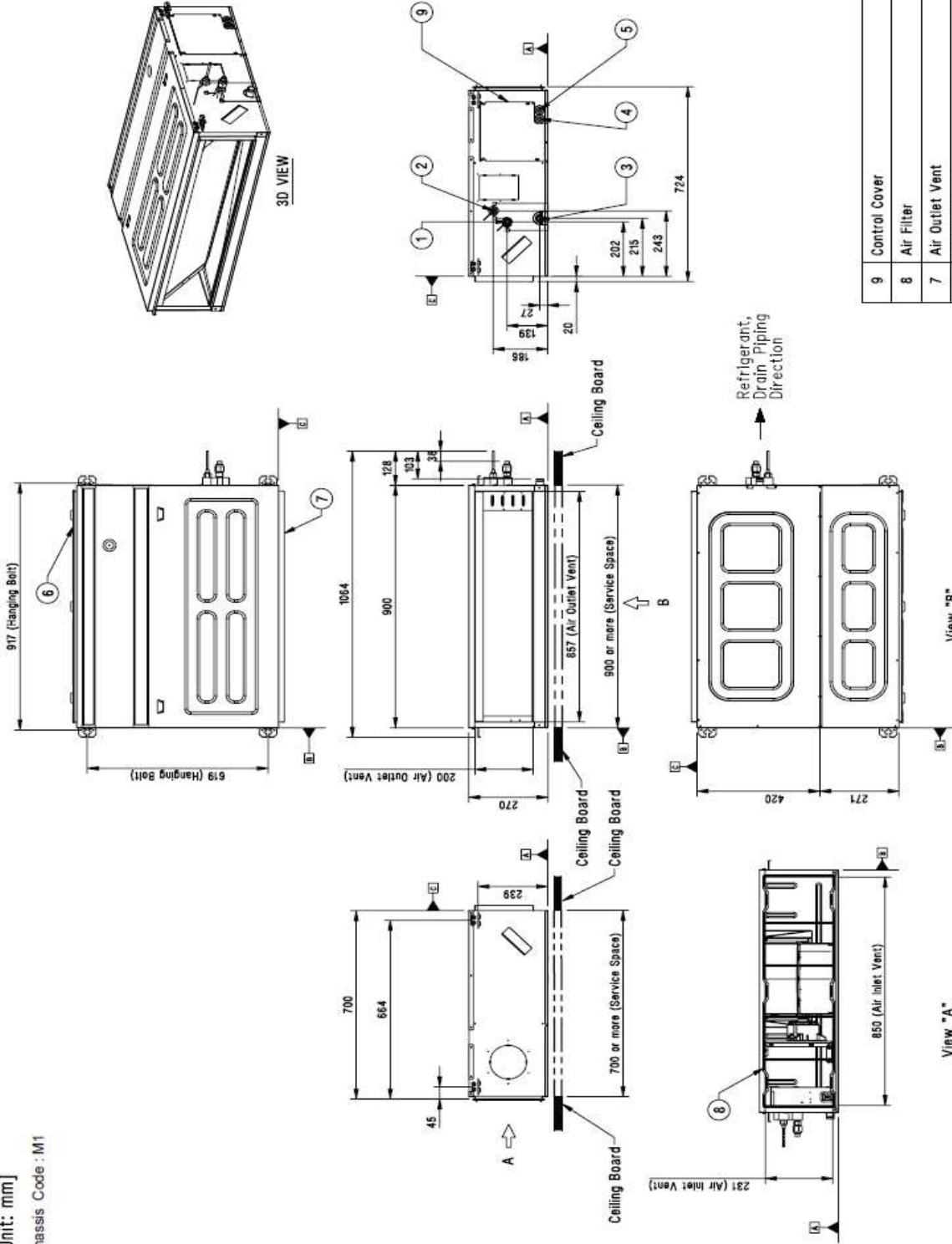


# Kanálová jednotka CM18~24F, UM30F

[Unit: mm]  
Chassis Code : M1



No.	Part Name	Description
9	Control Cover	-
8	Air Filter	Supplied with product
7	Air Outlet Vent	-
6	Air Inlet Vent	-
5	Wired Remote Controller Wire Routing Hole	-
4	Power and Communication Cable Routing Hole	-
3	Drain Pipe Connection	-
2	Liquid Pipe Connection	-
1	Gas Pipe Connection	-

## Note

- Unit should be installed in compliance with the installation manual in the product box.
- Unit should be grounded in accordance with the local regulations or applicable national codes.
- All electrical components and materials to be supplied from the site must comply with the local regulations or international codes.
- Electric characteristics chapter should be considered for electrical work and design. Especially, the power cable and circuit breaker should be selected in accordance with that.

## Symbols

- View Direction
- Datum line
- Refrigerant/Drain Piping Direction